

# CS66 | 6-axis Collaborative Robot

CS SERIES



6kg  
Payload



914mm  
Radius



$\pm 0.03\text{mm}$   
Repeatability



2.8m/s  
Max TCP Speed



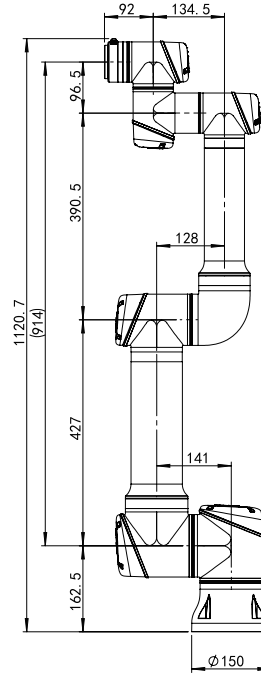
# CS66

## CS SERIES

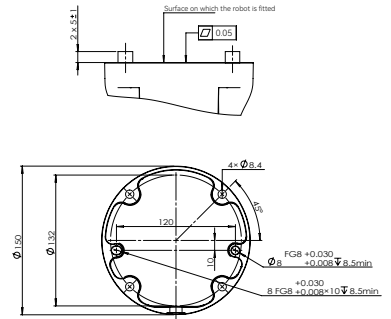


### Robotic Arm

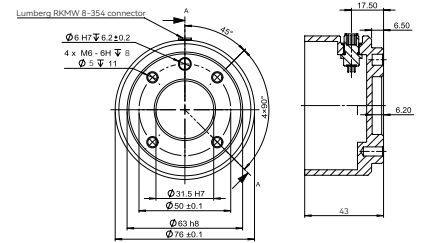
<b>Payload</b>	6kg
<b>Radius</b>	914mm
<b>Repeatability</b>	±0.03mm
<b>Axis</b>	6
<b>Joints rotation</b>	J1-J6 ±360°
<b>Joints speed</b>	J1-J2 150°/s
	J3 180°/s
	J4-J6 230°/s
<b>Max TCP Speed</b>	2.8m/s
<b>IP rating</b>	IP65 (IP68 upgradable)
<b>Operating Temperature range</b>	0-50 °C
<b>Relative humidity</b>	<90% (non-condensing)
<b>Typical power usage</b>	250w
<b>Mounting</b>	Any angle
<b>Tool I/O connector</b>	M8, 8pin
<b>Tool I/O ports</b>	4 config. DI, 4 config. DO; 1 AI, 1 AO
<b>Tool I/O power supply</b>	12V / 24V, 3A, 2A, 1A
<b>Tool I/O communication</b>	RS485
<b>Footprint</b>	Ø150mm
<b>Weight</b>	20kg
<b>Material</b>	Aluminum, Steel
<b>Cable length</b>	5.5m
<b>Certifications</b>	EN ISO 13849-1, PLd Category 3, EN ISO 10218-1



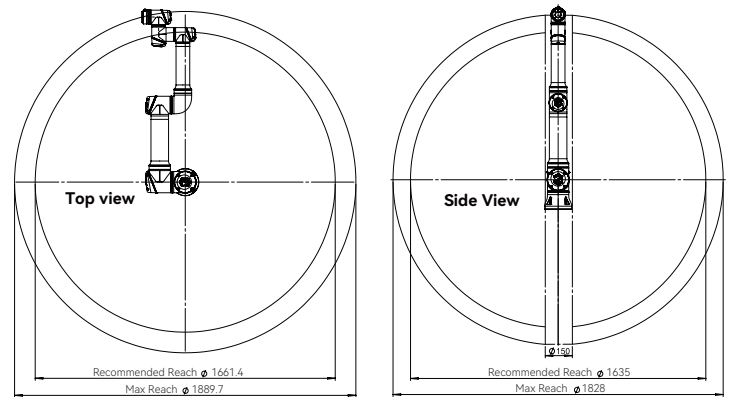
CS66 external dimensional drawing



CS66 base top view



CS66 end flange



CS66 working range diagram

### Teach-Pendant



<b>Size</b>	301mm x 232mm x 54mm
<b>Screen display size</b>	12.1"
<b>Resolution</b>	1280 x 800 pixels
<b>Material</b>	Aluminum, Plastic
<b>Weight</b>	2.1kg
<b>Cable length</b>	5.5m
<b>IP rating</b>	IP54
<b>Input method</b>	Capacitive touch-screen

### Controller



<b>Size</b>	505mm x 432mm x 257mm
<b>Material</b>	Aluminum, Steel
<b>IP rating</b>	IP54
<b>I/O ports</b>	24 DI (8 config.), 24 DO (8 config.); 2 AI, 2 AO
<b>I/O power supply</b>	24V; 3A (internal), 6A (external)
<b>Communication ports</b>	3 Ethernet ports, 1 RS485, 1 MiniDP, 1 USB 2.0, 1 USB 3.0
<b>Communication protocols</b>	TCP/IP, MODBUS TCP/RTU, EtherNet/IP, Profinet, OPCUA
<b>Power source</b>	100-240 VAC, 50-60 Hz